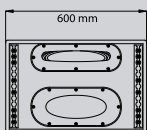
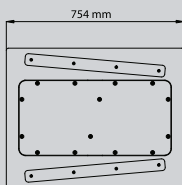
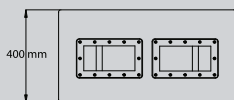
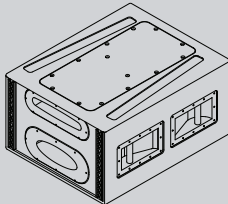




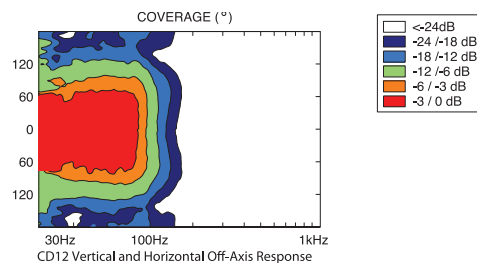
**SUB-BASS**



## SUB-BASS CD12 Advantages

- Unique directional subbass with hypercardioid pattern keeps subbass energy away from open microphones
- 120° x 120° dispersion, usable output from 39Hz to 250Hz
- Dual-ported 12" woofers fire in opposite directions and are wired in reverse polarity
- Requires NX242 Digital TDcontroller and two amplifier channels: Each woofer is processed separately
- Internally braced Baltic birch cabinet minimizes in-band resonances
- Available in dark grey carpet covering or textured black paint
- Integrated flying system for use with curved vertical GEO S Series tangent arrays
- Cabinets designed for stable ground stacking

The compact CD12 exhibits innovative control of long wavelength LF energy. The CD12 applies microphone design techniques "in reverse" to produce a hyper-cardioid pattern from twin 12-inch horizontally-opposed woofers. Sophisticated DSP algorithms, from the NX242 TDcontroller are applied individually to both dual-ported woofers, to produce high-impact forward gain, and +12dB rear attenuation. This means CD12 directs subbass energy towards the audience, and away from open microphones and reverberant surfaces, especially the rear wall.





NEXO is one of the world's leading sound reinforcement loudspeaker manufacturers. Founded in 1979, the company is dedicated to crafting practical solutions with solid engineering. Each new design begins with a proprietary sophisticated computer simulation process that allows every parameter to be extensively modeled and simulated, leading to breakthrough cost and performance gains. NEXO's comprehensive product line includes loudspeakers, analogue and digital control electronics and amplification; all designed to deliver consistent sound quality and long term reliability for a broad range of applications.

NEXO S.A.  
 Parc d'Activité  
 du Pré de la Dame Jeanne  
 B.P. 5  
 60128 PLAILLY  
 Tel: +33 (0) 3 44 99 00 70  
 Fax: +33 (0) 3 44 99 00 30  
 e-mail: info@nexo.fr

NEXO LatAM  
 C.C. No 33. Suc 49  
 Caballito (1449)  
 Buenos Aires  
 Argentina  
 Tel: +54 114 432 1911  
 Fax: +54 114 431 1007  
 e-mail: info@nexo.fr

NEXO Asia  
 GPO Box 806  
 Hong Kong  
 SAR China  
 Tel: +852 9096 3472  
 Fax: +852 2104 3214  
 e-mail: info@nexo.fr

## CD12 PRODUCT FEATURES

Components	2x 12" (30cm) Long-excursion Neodymium 6 $\Omega$ Driver
Height x Width x Depth	400 x 600 x 754mm (15 3/4" x 23 5/8" x 29 11/16")
Shape	Rectangular
Weight	35kg(78.4lbs) net
Connectors	2x NL4MP 4-pole SPEAKON (In & Through)
Construction	Baltic Birch Ply finish with structured black coating. Dark grey carpet is optional.
Flying points	Integral flying system.

## SYSTEM SPECIFICATIONS CD12 WITH NX242 TDCONTROLLER

Frequency Response [a]	42Hz – 130Hz $\pm$ 3dB
Usable Range @-6dB [a]	39Hz – 150Hz
Sensitivity 1W @ 1m [b]	102dB SPL Nominal
Peak SPL @ 1m [b]	131 to 134dB Peak (500 to 1200W RMS Amp)
Dispersion [c]	Hypercardioid pattern 120° x 120° over the entire usable bandwidth.
Directivity	Control is achieved through DSP algorithms in the NX242 Digital TDcontroller (two channels of the NX242 are used for the process).
Directivity Index [c]	Q = 3.773DI = 5.7dB over the entire usable bandwidth.
Crossover Frequency	90 or 130Hz Active through NX242 Digital TDcontroller
Nominal Impedance	2x 6 $\Omega$
Recommended Amplifiers	2x amplifier channels are required for Hypercardioid operation, each rated at 1500 to 3000Watts into 4 $\Omega$ per channel. Up to 2x complete CD12s per channel may be connected to a two-channel amplifier.

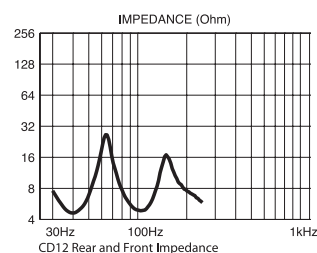
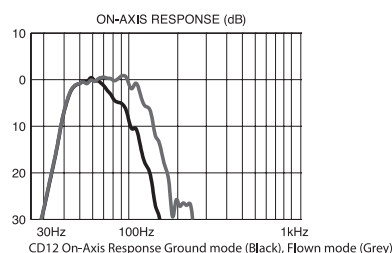
## SYSTEM OPERATION

Electronic Controller	The NX242 Digital TDcontroller presets are precisely matched to the GEO S8 Series cabinets and include sophisticated protection systems. Using GEO S8 Series cabinets without a properly-connected NX242 Digital TDcontroller will result in poor sound quality and can damage components.
Subbass	GEO S805 & S830 can be used without the optional CD12 Hypercardioid Sub. In this case the NX242 can be used in stereo. With the CD12 Hypercardioid Sub, each Sub channel requires two NX242 outputs, and the NX242 will operate in mono.
Speaker Cables	The front loudspeaker of the CD12 is wired 2+ & 2- while the rear loudspeaker is wired 1- & 1+. The CD12 must use separate cables to the GEO S805/S830.
Rigging System	Please refer to the GEO User Manual before any operation.

## SHIPPING & ORDERING

Packaging	CD12s are packaged individually. Minimum configuration for GEO Vertical Tangent Arrays is 5x S805 & 1x S830 (4x S805 for paging applications only). CD12s are optional: but a ratio of 1x CD12 per 3x full-range GEO modules is required for proper subbass output.
Shipping Weight & Volume	1x CD12 = 42.35kg(93.4 lbs), 0.29cu m (10.2cu ft)

As part of a policy of continual improvement, NEXO reserves the right to change specifications without notice. [a] Response Curves and Data: Half-space Anechoic below 200Hz. Usable Range Data: Frequency Response Capability with TD crossover slopes removed. [b] Sensitivity & Peak SPL: will depend on spectral distribution. Measured with band limited Pink Noise. Refers to the specified  $\pm$  3dB range. Data are for Speaker + Processor + recommended amplifier combinations. [c] Directivity Curves and Data: 1/3 octave smoothed frequency response, normalized to On-Axis response. Data obtained by computer processing of off-axis response curves. [d] Please refer to the GEO User Manual.



## LIMITED WARRANTY

NEXO loudspeakers and electronics are covered against defects in workmanship or materials for a period of two (2) years from the original date of purchase. At the option of NEXO the defective item will be repaired/replaced with no charge for materials/labour. The item is to be adequately packaged and dispatched, pre-paid, to a NEXO authorised distributor/service centre. Unauthorised repair shall void the warranty. The NEXO warranty does not cover cosmetics or finish and does not apply to any items which in NEXO's opinion have failed due to used abuse, accidents, modifications or any type of misuse. All images and text herein are the property of NEXO SA, and deemed accurate, although specifications are subject to change without notice.